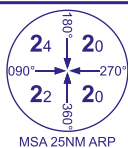
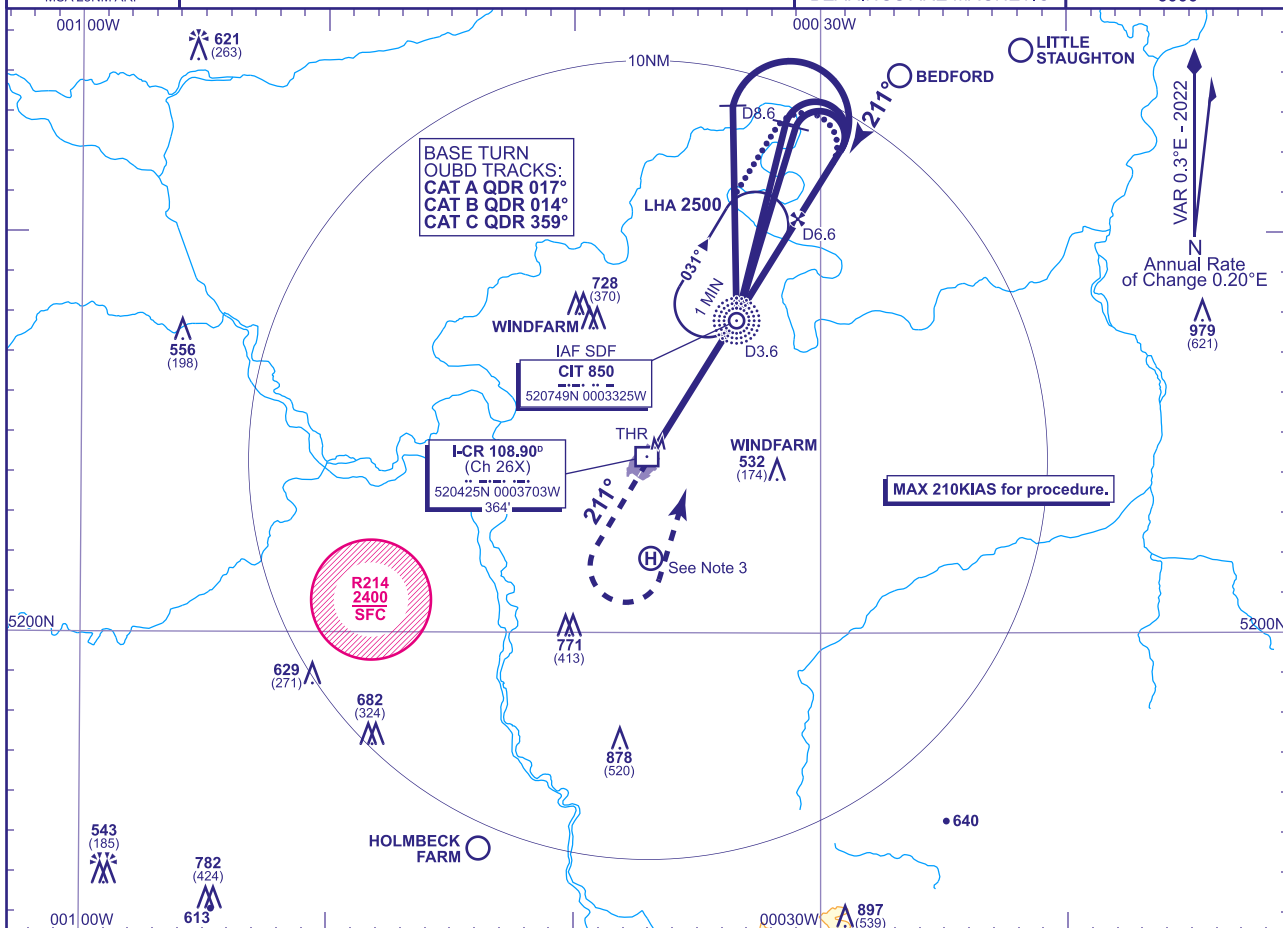


**CRANFIELD  
NDB(L)/DME  
RWY 21  
(ACFT CAT A,B,C)**



APP 122.855	CRANFIELD APPROACH	AD ELEVATION <b>360</b>
TWR 134.930, 122.855	CRANFIELD TOWER	THR ELEVATION <b>358</b>
		OBSTACLE ELEVATION <b>979 AMSL</b> (621) (ABOVE THR)
		BEARINGS ARE MAGNETIC

TRANSITION ALTITUDE  
6000



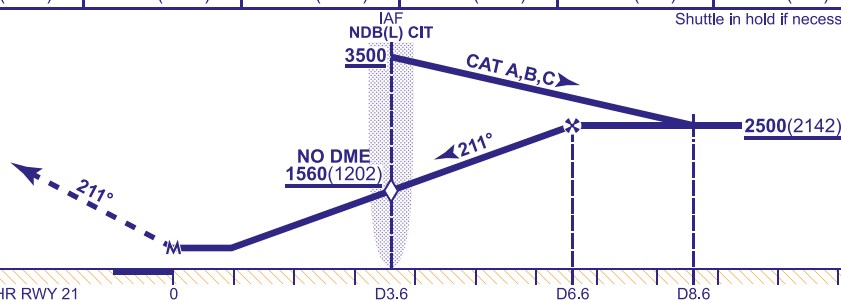
**RECOMMENDED PROFILE** Gradient 5.2%, 320FT/NM

DME I-CR	6	5	4	3.6 (SDF)	3	2	1
ALT(HGT)	2310(1952)	1990(1632)	1680(1322)	1560(1202)	1360(1002)	1040(682)	730(372)

Shuttle in hold if necessary.

**MAPt DME I-CR ZERO (THR RWY 21)**  
(3.64NM after NDB(L) CIT)

Climb straight ahead to **1500**, then climbing left turn to **2500** to join the **NDB(L) CIT** hold.



**DME I-CR** zero ranged to THR RWY 21

Aircraft Category		A	B	C	Rate of descent	G/S KT	160	140	120	100	80
OCA (OCH)	Procedure	690(332)	690(332)	690(332)		FT/MIN	860	750	640	540	430
VM(C)OCA (OCH AAL)	Total Area	800(440)	970(610)	1150(790)		NDB(L) CIT to MAPt	MIN:SEC	1:25	1:35	1:50	2:12

## ALTERNATIVE PROCEDURE EXTENDED HOLDING PATTERN

**ALTERNATIVE PROCEDURE EXTENDED HOLDING PATTERN**  
Extend the outbound leg of the NDB(L) CIT holding pattern to D8.6; descending to **2500**(2142), then turn right to intercept the FAT. Continue as for main Procedure.

## AIRCRAFT UNABLE TO RECEIVE DME

Fly outbound prior to base turn or extend outbound leg of the NDB(L) CIT hold for 2.5MIN (CAT A); 2MIN (CAT B); 1.5MIN (CAT C) descending to 2500(2142). Then turn right to intercept the FAT. When established inbound descend not below 1560(1202) at the SDF (NDB(L) CIT), then to MDH.

**NOTES** 1 ATC will normally require holding **not below 3500**. Lowest altitude to commence procedure after missed approach is **2500**.

3 Occasional helicopter activity at Helimech Helipad (520152N 0003653W).

**CHANGE (7/25): EGD206 REMOVED.**

AERO INFO DATE 17 APR 25

AD 2-EGTC-8-5